

THE PANAMORPH APPROACH

Maximize your projector's performance.

**33%
MORE
PIXELS**

**30%
MORE
BRIGHTNESS**

**FULL
RESOLUTION**

As compared to the zoom method.



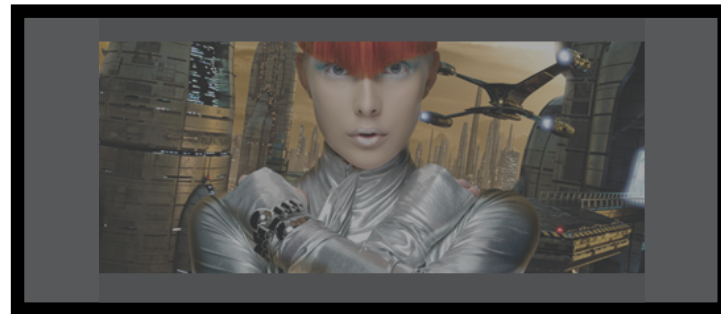
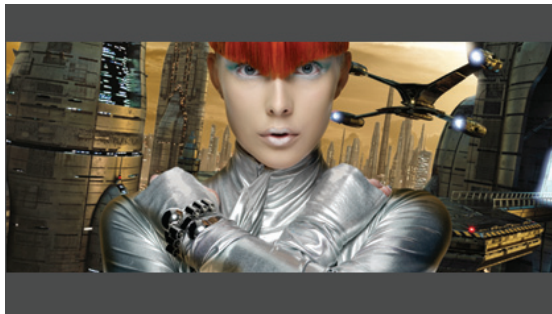
Use the Mode I scaling in your projector to light up all 1920 x 1080 pixels.



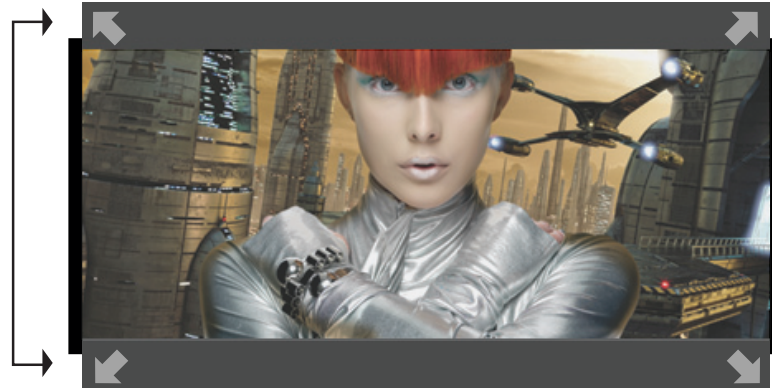
Panamorph lens stretches the image utilizing full brightness and resolution in the projector.

THE ZOOM METHOD

Zoom uses **25% FEWER** pixels to fill **80% MORE** screen area, reducing your projector's brightness.



The unused pixels end up falling onto the wall above and below the screen. On projectors with an Auto-Iris the "black bars" can be seen to vary in brightness depending on picture content.



▶ Still only lighting up approximately 810 vertical pixels.